



**DESCRIPTION**

The 1SMA4728 ~1SMA4777 are available in SMA Package.

**ORDERING INFORMATION**

Package Type	Part Number	
SMA	1SMA4728	1SMA4753
	1SMA4729	1SMA4754
	1SMA4730	1SMA4755
	1SMA4731	1SMA4756
	1SMA4732	1SMA4757
	1SMA4733	1SMA4758
	1SMA4734	1SMA4759
	1SMA4735	1SMA4760
	1SMA4736	1SMA4761
	1SMA4737	1SMA4762
	1SMA4738	1SMA4763
	1SMA4739	1SMA4764
	1SMA4740	1SMA4765
	1SMA4741	1SMA4766
	1SMA4742	1SMA4767
	1SMA4743	1SMA4768
	1SMA4744	1SMA4769
	1SMA4745	1SMA4770
	1SMA4746	1SMA4771
	1SMA4747	1SMA4772
	1SMA4748	1SMA4773
	1SMA4749	1SMA4774
	1SMA4750	1SMA4775
1SMA4751	1SMA4776	
1SMA4752	1SMA4777	
Note	SPQ: 5,000pcs/Reel	
AiT provides all RoHS Compliant Products		

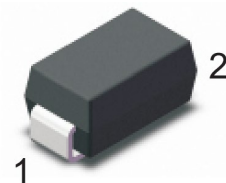
**FEATURE**

- Total Power Dissipation: Max. 1W.
- Wide Zener Reverse Voltage Range 3.3V to 330V
- Small Plastic Package Suitable for Surface Mounted Design.

**MECHANICAL DATA**

- Case: SMA
- Terminals: Solderable per MIL-STD-750, Method 2026
- Approx. Weight: 55mg / 0.002oz

**PIN DESCRIPTION**



SMA Package



PIN#	DESCRIPTION
1	CATHODE
2	ANODE



## ABSOLUTE MAXIMUM RATINGS

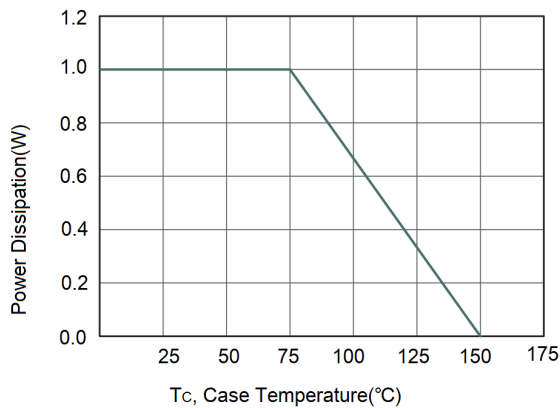
$T_a = 25^\circ\text{C}$ , unless otherwise noted.

$P_D$ , Power Dissipation at $T_L=75^\circ\text{C}$	1W
$V_F$ , Forward Voltage at $I_F=200\text{mA}$	1.2V
$T_J$ , Junction Temperature Range	$-55^\circ\text{C} \sim +150^\circ\text{C}$
$T_S$ , Storage Temperature Range	$-55^\circ\text{C} \sim +150^\circ\text{C}$

Stresses above may cause permanent damage to the device. These are stress ratings only and functional operation of the device at these or any other conditions beyond those indicated in the Electrical Characteristics are not implied. Exposure to absolute maximum rating conditions for extended periods may affect device reliability.

## TYPICAL PERFORMANCE CHARACTERISTICS

Fig 1. Maximum Continuous Power Derating





**ELECTRICAL CHARACTERISTICS**

T<sub>a</sub> = 25°C, unless otherwise noted.

Part Number	Zener Voltage Range				Dynamic Impedance	Reverse Current		Admissible Zener Current
	V <sub>ZT</sub> ( at I <sub>ZT</sub> )			at I <sub>ZT</sub>	Z <sub>ZT</sub> (at I <sub>ZT</sub> )	I <sub>R</sub>	at V <sub>R</sub>	I <sub>ZM</sub> (mA)
	Min.(V)	NOM(V)	Max.(V)	(mA)	Max.(Ω)	Max(μA)	(V)	
1SMA4728	3.10	3.30	3.50	75	10	100	1	285
1SMA4729	3.40	3.60	3.80	69	10	100	1	263
1SMA4730	3.70	3.90	4.10	64	9	50	1	243
1SMA4731	4.06	4.30	4.56	58	9	25	1	219
1SMA4732	4.50	4.70	4.93	53	8	10	1	203
1SMA4733	4.84	5.10	5.36	49	7	10	1	186
1SMA4734	5.32	5.60	5.92	45	5	10	2	170
1SMA4735	5.86	6.20	6.51	41	2	10	3	154
1SMA4736	6.46	6.80	7.18	37	3.5	10	4	140
1SMA4737	7.12	7.50	7.88	34	4	10	5	127
1SMA4738	7.79	8.20	8.67	31	4.5	10	6	116
1SMA4739	8.60	9.10	9.59	28	5	10	7	104
1SMA4740	9.50	10	10.50	25	7	10	7	95
1SMA4741	10.40	11	11.60	23	8	5	8	86
1SMA4742	11.40	12	12.60	21	9	5	9	79
1SMA4743	12.40	13	14.10	19	10	5	10	71
1SMA4744	13.80	15	15.80	17	14	5	11	63
1SMA4745	15.20	16	17.10	16	16	5	12	58
1SMA4746	16.80	18	19.20	14	20	5	13	52
1SMA4747	19.00	20	21.20	13	22	5	15	47
1SMA4748	20.80	22	23.30	12	23	5	17	43
1SMA4749	22.80	24	26.00	11	25	5	18	38
1SMA4750	25.30	27	28.90	9.5	35	5	21	35
1SMA4751	28.20	30	32.00	8.5	40	5	23	31
1SMA4752	31.30	33	34.90	7.5	45	5	25	28
1SMA4753	34.20	36	37.90	7.0	50	5	27	26
1SMA4754	37.20	39	41.50	6.5	60	5	30	24
1SMA4755	40.90	43	45.60	6.0	70	1	32	22

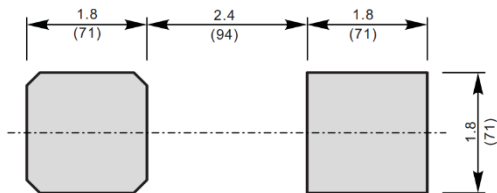
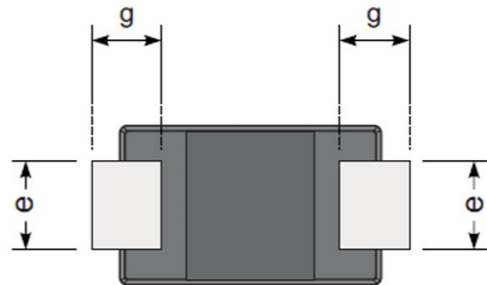
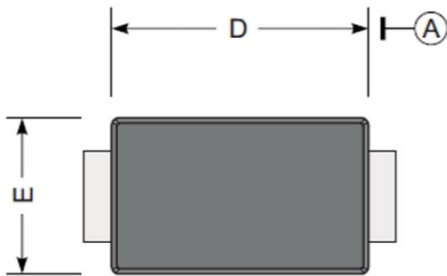
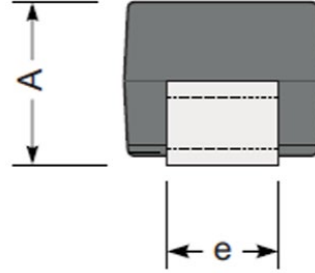
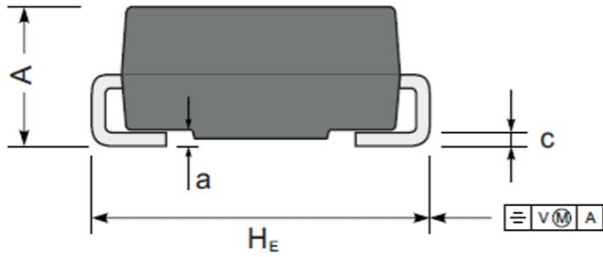


Part Number	Zener Voltage Range				Dynamic Impedance	Reverse Current		R Admissible Zener Current
	V <sub>ZT</sub> ( at I <sub>ZT</sub> )			at I <sub>ZT</sub>	Z <sub>ZT</sub> (at I <sub>ZT</sub> )	I <sub>R</sub>	at V <sub>R</sub>	I <sub>ZM</sub> (mA)
	Min.(V)	NOM(V)	Max.(V)	(mA)	Max.(Ω)	Max(μA)	(V)	
1SMA4756	44.90	47	49.80	5.5	80	1	35	20
1SMA4757	48.60	51	54.00	5.0	95	1	38	18
1SMA4758	53.60	56	58.80	4.5	110	1	42	17
1SMA4759	58.90	62	65.60	4.0	125	1	47	15
1SMA4760	64.60	68	71.70	3.7	150	1	52	14
1SMA4761	71.20	75	78.80	3.3	175	1	56	12
1SMA4762	77.90	82	87.00	3.0	200	1	62	11
1SMA4763	86	91	96.00	2.8	250	1	69	10
1SMA4764	95	100	105	2.5	350	1	76	9.50
1SMA4765	104	110	116	2.3	450	1	84	8.60
1SMA4766	114	120	127	2.0	550	1	91	7.80
1SMA4767	125	135	142	1.9	700	1	100	7
1SMA4768	140	150	157	1.7	900	1	110	6.30
1SMA4769	155	165	172	1.6	1100	1	120	5.80
1SMA4770	170	180	191	1.4	1200	1	135	5.20
1SMA4771	189	200	211	1.2	1400	1	150	4.70
1SMA4772	209	220	231	1.0	1600	1	165	4.30
1SMA4773	229	240	251	1.0	1800	1	180	3.90
1SMA4774	249	260	271	1.0	2000	1	190	3.70
1SMA4775	269	280	291	1.0	2100	1	205	3.40
1SMA4776	289	300	315	1.0	2300	1	230	3.10
1SMA4777	313	330	346	1.0	2500	1	250	2.80



**PACKAGE INFORMATION**

Dimension in SMA Package (Unit: mm)



Unit :  $\frac{\text{mm}}{\text{(mil)}}$

The recommended mounting pad size

SYMBOL	MIN	MAX
A	1.900	2.200
a	0.300	
c	0.150	0.310
D	4.000	4.500
E	2.300	2.700
e	1.300	1.600
g	0.900	1.500
HE	4.700	5.200



## IMPORTANT NOTICE

AiT Semiconductor Inc. (AiT) reserves the right to make changes to any its product, specifications, to discontinue any integrated circuit product or service without notice, and advises its customers to obtain the latest version of relevant information to verify, before placing orders, that the information being relied on is current.

AiT Semiconductor Inc. integrated circuit products are not designed, intended, authorized, or warranted to be suitable for use in life support applications, devices or systems or other critical applications. Use of AiT products in such applications is understood to be fully at the risk of the customer. As used herein may involve potential risks of death, personal injury, or server property, or environmental damage. In order to minimize risks associated with the customer's applications, the customer should provide adequate design and operating safeguards.

AiT Semiconductor Inc. assumes to no liability to customer product design or application support. AiT warrants the performance of its products of the specifications applicable at the time of sale.